

*Our Specialty is Immunoassays™*

Contract Manufacturing  
Custom Assay Development  
ELISA & CLIA Kits & Components  
Special Chemistry Reagents  
Random Access Magnetic Bead Assays



## Calbiotech Product & Services Catalog

[www.calbiotech.com](http://www.calbiotech.com)



Calbiotech is a worldwide leader in immunoassay development and manufacturing. With over 30 years of experience, the Calbiotech team has established itself as a leader in the industry, offering over 200 products distributed to over 50 countries. With investments in automation and state-of-the-art technologies, Calbiotech helps ensure its customers receive high-quality, stable, flexible, automation-ready, and cost effective products and services.

Calbiotech's Custom Development team is ready to take your innovation from *Pipeline* to *Production*™. The company has custom developed hundreds of ELISA and CLIA kits, random access magnetic bead assays, coated microplates, reagents, buffers and other components for major reference labs, pharmaceutical companies, universities and research centers in the U.S. and around the world.

### Contract Manufacturing Services Include:

- Immunoassay Development
- Microplate Coating
- Reagent Preparation
- Bottling, Labeling and Packaging

### Over 200 ELISA, CLIA and Random Access Magnetic Bead Kits:

- Thyroid
- Fertility
- Steroid
- Diabetes
- Allergy
- Anemia
- Growth Markers
- Bone Metabolism
- Inflammatory Diseases
- Cancer
- Cardiac
- Drugs of Abuse
- Autoimmune Disorders
- Infectious Diseases
- Research Animal



## Custom Services

Custom Immunoassay Development.....	4
-------------------------------------	---

## Contract Manufacturing

Microplate Coating .....	5
--------------------------	---

Reagent Preparation .....	6
---------------------------	---

Bottling, Labeling and Packaging .....	6
--	---

Special Chemistry Bulk Reagents .....	7
---------------------------------------	---

lumELISA™ Ultra-Sensitive Chemiluminescence .....	8
---	---

Chemiluminescence Immunoassays .....	9
--------------------------------------	---

Magnetic Bead Assays .....	10
----------------------------	----

CalMagBeads™ Streptavidin .....	11
---------------------------------	----

## Human ELISA Kits

Allergy Markers.....	12
----------------------	----

Anemia Markers.....	12
---------------------	----

Autoimmune Disorders.....	12
---------------------------	----

Bone Metabolism Markers .....	12
-------------------------------	----

Cancer Markers.....	12
---------------------	----

Cardiac Markers.....	12
----------------------	----

Diabetes Markers.....	12
-----------------------	----

Drugs of Abuse.....	13
---------------------	----

Fertility Markers.....	13
------------------------	----

Growth Markers.....	13
---------------------	----

Infectious Diseases.....	13-14
--------------------------	-------

Inflammatory Markers.....	14
---------------------------	----

Steroid Markers.....	14
----------------------	----

Thyroid Markers.....	14
----------------------	----

Research Animal ELISA Kits.....	15
---------------------------------	----

LDT Components .....	16
----------------------	----

Publications.....	17
-------------------	----

Ordering Information.....	18
---------------------------	----



### Custom Immunoassay Development

Calbiotech immunoassay development services are backed by over 30 years of expertise with over 200 different immunoassay kits that have been developed, manufactured and distributed to over 50 countries. Using novel techniques and formulations, the company is able to overcome obstacles in development to build robust and reproducible assays for its customers.

Custom immunoassay development services include:

- Immunoassay kits or components in human or animal matrices
- Assays for further manufacturing or technology transfer
- Design control suitable for RUO or FDA PMA/510(k) submissions
- Fast turnaround time and competitive pricing

### Validation Studies

During assay development, Calbiotech will work hand in hand with you and your team to ensure project goals and study requirements are being met. Using validated design control methods, the following are provided throughout the development phase:

- Analytical sensitivity study
- LOQ/LOD analysis
- Cross reactivity with relevant targets
- Specificity with other targets
- Intra and inter-assay precision
- Linearity study
- Parallelism study
- Normal range and diseased sample ranges analysis

### Timeline

Calbiotech will work closely with the project team to help keep assay development timelines on plan.

A standard ELISA assay development timeline, assuming key raw materials are provided, can typically be completed in 6 - 8 weeks.



## Microplate Coating

Calbiotech has extensive experience in providing highly skilled microplate coating services to the pharmaceutical, medical device and biotech industries. With a focus on quality, Calbiotech's automated and validated microplate coating services include fast project start times (about 2 weeks), flexible batch sizes (from 50-5000) and high plate-to-plate and lot-to-lot correlation (CV <4%).

## Coating Expertise and Services

With over 15 years of experience, the highly trained technical support staff provides:

- Outsourcing: Your microplate coating processes and protocols performed by Calbiotech
- Development: Expertise to select, design, and/or modify existing application-specific coating processes and raw materials
- Planning: Scheduled manufacturing and delivery of coated microplates
- Quality: In-process and QC release testing of each batch, plate-to-plate, and lot-to-lot to ensure accuracy, precision, and stability passes specifications

## Manufacturing Capabilities

Calbiotech operates a fully validated microplate manufacturing facility under cGMP and ISO 13485:2003 specifications. The company's vast microplate coating capabilities include but are not limited to:

- 8 and 12 well strips, 96, 384 and 1536 microwell plates
- Filter bottom, solid and specialty plate capabilities
- High throughput (up to 1000 plates/hour)
- Dispense volumes from 1  $\mu$ L - 1 mL
- Environmentally controlled (temp/humidity) drying chambers
- Microplate labeling for quality control and traceability
- Individually-pouched or bulk-packaged microplates
- Microplate sealing including: clear, foil, peelable, and pierceable seals

## Set-up & Production Time

- Initial project set-up can be accomplished in as little as 2 weeks
- Production runs are usually completed in 3 - 4 days





## Custom Buffer Preparation

Calbiotech offers contract manufacturing of cGMP compliant, fully traceable, supply chain-managed buffers and reagents from a dependable and stable source providing an economical outsourced alternative. Calbiotech has been designing, developing and manufacturing custom diagnostic reagents and kits since 1998. On a OEM basis, Calbiotech produces *in vitro* diagnostic controls and reagents, custom processed human and animal serums and matrices for the manufacture of diagnostic calibrators and controls. With a highly skilled manufacturing staff, an expert R&D Team and customer focus, you can be confident that Calbiotech is the right contract manufacturing partner.



## Capabilities and Expertise

Calbiotech operates a fully validated manufacturing facility under cGMP and ISO 13485:2003 specifications. Contract manufacturing services include:

- Dedicated project management: From technical transfer to manufacturing and distribution
- An expert R&D Team: Highly trained, technical support assistance with selecting and qualifying the right raw materials, manufacturing process design, and reagent preparation
- Custom packaging: A full range of label and vial specifications spanning volumes of 0.25 mL - 2.5 L, and bulk liquids, ranging from 250 mL - 500 L
- Flexible batch sizes: From 50 to 50,000 vials (serum) with sizes ranging from 0.25 mL - 25 mL
- Long-term supply agreements: Ensuring receipt of the product you need for as long as you need it
- Flexible delivery schedules: Coordinated logistics to suit unique delivery needs
- Proven track record: Customers turn to and stay with Calbiotech for their experience and service as an OEM provider

## Set-up and Production Time

- Initial project set-up can be done in as little as 2 weeks
- Production runs are usually completed in 3 - 4 days

## Bottling, Labeling and Packaging

In addition to an extensive range of existing ready-to-use reagents, Calbiotech also offers contract manufacturing services for dispensing, capping and labeling in a variety of vials and bottles, from 0.25  $\mu$ L to 10 L.



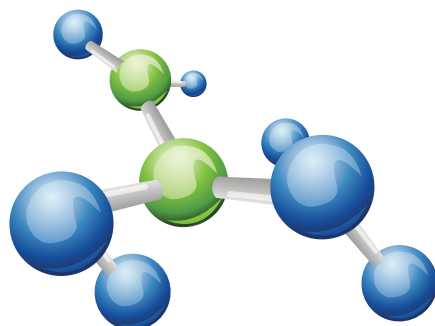


A new line of general chemistry reagents are now available through Calbiotech to provide a more comprehensive menu of solutions for the laboratory. As with all Calbiotech products, the general chemistry reagents are designed for optimal performance and utility:

- High Quality Manufacturing: All reagents are manufactured in compliance with cGMP and ISO 13485 guidelines
- Applications: Available for most chemistry analyzers
- Performance: Highly reproducible performance and linearity across a wide detection range
- Stability: Reagents are stable for a minimum of 12 months from shipping date

## Liquid Stable Reagents by Liter

<u>Product</u>	<u>Method</u>
<b>High Density Lipoprotein-Cholesterol (HDL-C)</b>	Direct
<b>Low Density Lipoprotein-Cholesterol (LDL-C)</b>	Direct
<b>Glycated Hemoglobin-II (HbA1c-II)</b>	Latex Immunoturbidimetry
<b>Homocysteine (HCY)</b>	Enzymatic Cycling
<b>High-sensitivity C-Reactive Protein (hs-CRP)</b>	Latex Immunoturbidimetry
<b>Prealbumin (PA)</b>	Immunoturbidimetry
<b>Cystatin C (CYS-C)</b>	Latex Immunoturbidimetry
<b>β2-Microglobulin (β2MG)</b>	Latex Immunoturbidimetry
<b>Microalbuminuria (m-ALB)</b>	Immunoturbidimetry
<b>α1-Microglobulin (α1-MG)</b>	Latex Immunoturbidimetry
<b>Apolipoprotein A1 (APOA1)</b>	Immunoturbidimetry
<b>Apolipoprotein B (APOB)</b>	Immunoturbidimetry
<b>Apolipoprotein E (APOE)</b>	Immunoturbidimetry
<b>Lipoprotein(a) (Lp(a))</b>	Immunoturbidimetry
<b>Myoglobin (MYO)</b>	Latex Immunoturbidimetry
<b>D-Dimer (DD)</b>	Latex Immunoturbidimetry
<b>Fibrin and Fibrinogen Degradation Products (FDP)</b>	Latex Immunoturbidimetry
<b>Immunoglobulin-G (IgG)</b>	Immunoturbidimetry
<b>Immunoglobulin-A (IgA)</b>	Immunoturbidimetry
<b>Immunoglobulin-M (IgM)</b>	Immunoturbidimetry
<b>Complement Component 3 (C3)</b>	Immunoturbidimetry
<b>Complement Component 4 (C4)</b>	Immunoturbidimetry
<b>Transferrin (TRF)</b>	Immunoturbidimetry
<b>C-Reactive Protein (CRP)</b>	Latex Immunoturbidimetry
<b>Anti-Streptolysin O (ASO)</b>	Latex Immunoturbidimetry
<b>Rheumatoid Factor (RF)</b>	Latex Immunoturbidimetry





Calbiotech's proprietary lumELISA™ ultra-sensitive chemiluminescent technology can be applied to almost any immunoassay system to enhance sensitivity and expand dynamic range while decreasing sample volume and total assay time.

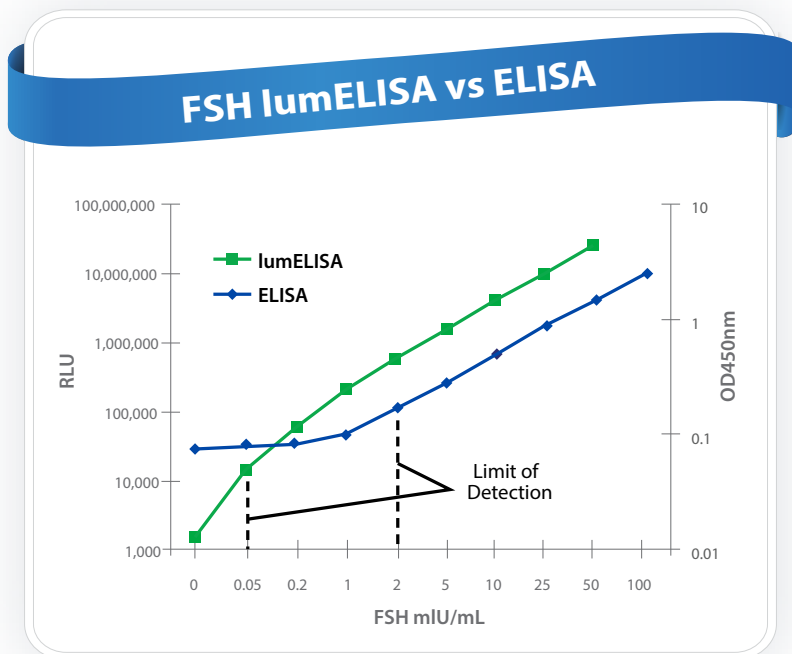
## Typical Applications:

- Convert assays from RIA
- Pediatric sample testing
- Mouse/rat sample testing
- When sensitivity, sample size and dynamic range matter

## Features:

- Ultra-sensitive
- Wide dynamic range (4-log)
- Small sample volume
- Short incubation time at room temperature

## lumELISA vs. Traditional ELISA



Std, mIU/m	lumELISA	ELISA
0	1420	0.077
0.05	14142	0.08
0.2	60057	0.085
1	188564	0.1
2	558175	0.17
5	1542154	0.283
10	4073196	0.5
25	10214102	0.88
50	24602100	1.478
100	-	2.5

The lumELISA demonstrates up to a 20-fold increase in sensitivity using only 10 µL sample size.

## Ultra-Sensitive CLIA

Product	Catalog #	Sensitivity (LOQ)	Sample Volume	Runtime
FSH Pediatric lumELISA	FS551F	0.05 mIU/mL	25 µL	60 minutes
LH Pediatric lumELISA	LH550F	3.1 mIU/mL	25 µL	60 minutes
ACTH lumELISA (Mouse/Rat)	AC562T-100	7 pg/mL	200 µL	120 minutes



## Calbiotech's New Line of CLIA Kits

Using advanced chemiluminescent technology and streptavidin-biotin principle, these high affinity binding immunoassay kits provide improved sensitivity and highly reproducible results. Calbiotech CLIA kits employ common SAV-coated microplates, wash buffers and luminol, making the products suitable for automated high-throughput applications.

### Features:

- Enhanced sensitivity
- Shorter assay time
- Wider dynamic range
- Room temperature incubations
- Automation ready
- Optimal convenience, efficiency and performance

The following CLIA kits are currently available:

### Chemiluminescence Immunoassays

<b>Product</b>	<b>Catalog #</b>	<b>Sensitivity (LOQ)</b>	<b>Sample Volume</b>	<b>Runtime</b>
<b>Thyroxine (T4)</b>	T4564T	2 µg/dL	25 µL	60/15 mins
<b>Thyroxine, Free (fT4)</b>	FT553T	0.4 ng/dL	50 µL	60/15 mins
<b>Triiodothyronine (T3)</b>	T3556T	1.4 pg/mL	50 µL	60/15 mins
<b>Triiodothyronine, Free (fT3)</b>	FT552T	1.4 pg/mL	50 µL	60/15 mins
<b>TSH</b>	TS565T	0.5 µIU/mL	50 µL	60/15 mins
<b>FSH</b>	FS563F	5 mIU/mL	50 µL	60/15 mins
<b>hCG</b>	HC567F	10 mIU/mL	25 µL	60/15 mins
<b>LH</b>	LH554F	3.1 mIU/mL	50 µL	60/15 mins
<b>Prolactin</b>	PR568F	5 ng/mL	25 µL	60/15 mins
<b>Androstenedione</b>	AD582E	0.12 ng/mL	25 µL	60/15 mins
<b>Cortisol</b>	CO569S	20 ng/mL	25 µL	60/15 mins
<b>DHEA-S</b>	DH579S	0.5 µg/mL	25 µL	60/15 mins
<b>Free Estriol</b>	EF581S	0.4 ng/mL	50 µL	60/30 mins
<b>Estradiol</b>	ES 571S	10 pg/mL	50 µL	60/30 mins
<b>Free Testosterone</b>	FT583S	0.25 pg/mL	20 µL	75 mins
<b>Progesterone</b>	PG580S	2.5 ng/mL	10 µL	60/15 mins
<b>Testosterone</b>	TE570S	0.1 ng/mL	25 µL	60/15 mins
<b>AFP</b>	AF574T	5 ng/mL	25 µL	60/15 mins
<b>CEA</b>	CE572T	5 ng/mL	50 µL	60/15 mins
<b>PSA</b>	PS573T	2 ng/mL	25 µL	60/15 mins
<b>CA 125</b>	CA125L	15 U/mL	200 µL	90/20 mins
<b>CA 15-3</b>	CA153L	15 U/mL	10 µL	90/20 mins
<b>CA 19-9</b>	CA199L	25 U/mL	100 µL	90/20 mins
<b>IgE</b>	IE584A	40 IU/mL	20 µL	60/15 mins
<b>Ferritin</b>	FR585T	10 ng/mL	10 µL	30/30/15 mins
<b>25(OH) Vitamin D</b>	VD566B	1.25 ng/mL	10 µL	90/30/30 mins
<b>ANA</b>	AN563G	-	10 µL	20/20/10 mins
<b>Anti-TG</b>	TG575T	-	10 µL	20/20/10 mins
<b>Anti-TPO</b>	TP576T	-	10 µL	20/20/10 mins



## Calbiotech Introduces New MagCLIA™ Magnetic Bead Reagents for Random Access Immunoassay Analyzers

Calbiotech's full immunoassay menu is available in MagCLIA™ technology.

### Application

- Random access (closed or open systems)
- Point of care

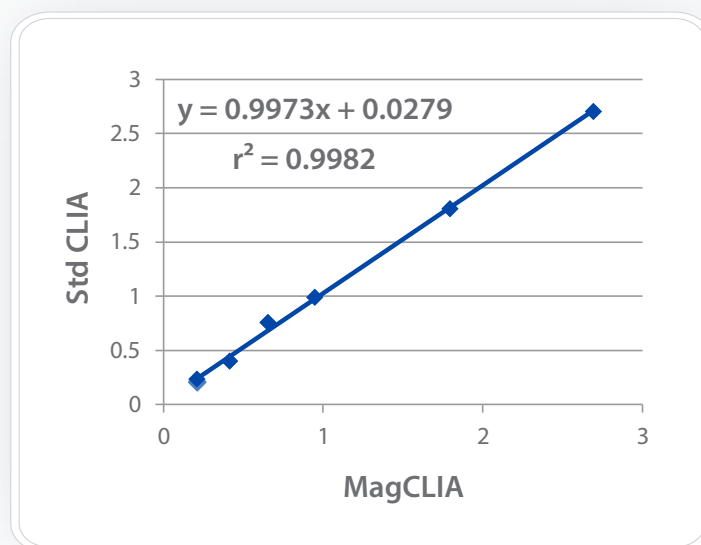
### Advantages

- Convenience
- Low-cost
- High reproducible
- Comparable to major random access systems
- High throughput

### Example: MagCLIA Kits

MagCLIA	
Conc., ng/mL	Signal
0	0.03
5	0.21
10	0.41
25	0.95
50	1.79
100	2.69

Control	Conc., ng/mL	Expected, ng/mL
CTRL 1	4.9	5.91
CTRL 2	16.7	17.50
CTRL 3	40.5	40.11



### Method Comparison: MagCLIA vs. CLIA

Sample ID	MagCLIA	CLIA
	Conc., ng/mL	Conc., ng/mL
Serum 5	77.3	86.90
Serum 6	55.0	68.66
Serum 7	60.7	61.89
Serum 3/5	21.7	19.69
Serum E41	6.0	7.68
Serum E48	4.6	4.66
Serum E22	27.1	22.32

### Conclusion

The MagCLIA was highly correlated with the CLIA test. Slope: 0.997;  $r^2 = 0.998$



## The Most Cost Effective, Efficient and Highest Binding Capacity Beads in the Market!

Calbiotech's streptavidin magnetic beads (CalMagBeads™ Streptavidin) are superparamagnetic beads covalently coupled via an innovative linking technology with recombinant streptavidin for the binding of biotinylated molecules. The proprietary CalMagBeads Streptavidin linking technology provides the highest grade and most efficient beads product that possesses unprecedented binding capacity.

### Binding Capacity

Based on preliminary studies, 1 mg CalMagBeads Streptavidin is expected to bind:

- 22 – 34 nmoles free biotin
- ~400 µg biotinylated IgG
- ~8 nmol biotinylated peptides
- ~400 µg ds-DNA
- ~8 nmol ss-oligonucleotides

### Application

- Solid phase immunoassay
- Immunoprecipitation
- Cell isolation
- Nucleic acid isolation
- Purification of DNA/RNA binding proteins
- Protein purification
- Well-suited for automated applications

### Advantages

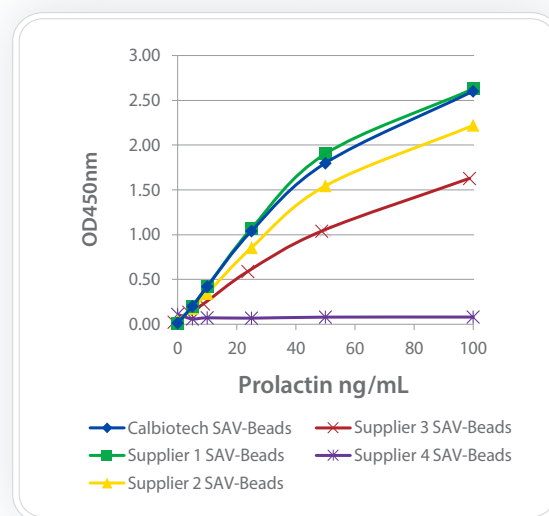
- Liquid stable; ready to use
- The highest binding capacity in the market
- Negligible non-specific binding
- Compatible with broad pH and temperature range
- Cost effective

## Supplier Comparison CalMagBeads vs. four other suppliers

	Calbiotech SAV-Beads	Supplier 1 SAV-Beads	Supplier 2 SAV-Beads	Supplier 3 SAV-Beads	Supplier 4 SAV-Beads
<b>STD, ng/mL</b>	<b>Signal</b>				
<b>0</b>	0.01	0.01	0.04	0.02	0.11
<b>5</b>	0.20	0.19	0.18	0.13	0.06
<b>10</b>	0.42	0.42	0.34	0.23	0.07
<b>25</b>	1.04	1.07	0.86	0.59	0.07
<b>50</b>	1.80	1.90	1.55	1.04	0.08
<b>100</b>	2.60	2.63	2.22	1.63	0.08

<b>Control</b>	<b>Conc., ng/mL</b>				<b>Expected, ng/mL</b>
<b>BR1</b>	6.0	6.2	6.3	5.8	4.96 - 9.84
<b>BR2</b>	14.6	14.1	14.4	12.9	12.3 - 24.4
<b>BR3</b>	36.4	37.1	35.3	30.8	28.0 - 55.7



### Conclusion

Calbiotech's CalMagBeads and Supplier 1 SAV-Beads exhibited identical performance, however the CalMagBeads are superior in terms of its biotin binding capacity.

Supplier 2 SAV-Beads performed adequately, but with a bit higher background and lower biotin binding capacity.

Supplier 3 SAV-Beads have the lowest binding capacity of all SAV-Bead products with measurable reactivity.

Supplier 4 SAV-Beads did not exhibit any reactivity.



## Allergy Markers *Sample Type: Serum. Runtime: 30/30/10 minutes*

<u>Product</u>	<u>Catalog #</u>	<u>Sensitivity (LOQ)</u>	<u>Sample Volume</u>
<b>IgE</b>	TI244A	40 IU/mL	20 µL

## Anemia Markers *Sample Type: Serum.*

<u>Product</u>	<u>Catalog #</u>	<u>Sensitivity (LOQ)</u>	<u>Sample Volume</u>	<u>Run Time</u>
<b>Ferritin</b>	FR248T	10 ng/mL	10 µL	20/20/10 mins
<b>Hepcidin</b>	ICE008	0.8 ng/mL	20 µL	60/60/30/15/10
<b>Vitamin B12</b>	Coming Soon			

## Autoimmune Disorders *Sample Type: Serum/Plasma. Sample Volume: 10µL Runtime: 20/20/10 minutes*

<u>Product</u>	<u>Catalog #</u>	<u>Product</u>	<u>Catalog #</u>
<b>ANA Screen IgG</b>	AN033G	<b>RNP/Sm IgG</b>	RN038G
<b>Cardiolipin IgA</b>	CA035A	<b>Scl-70</b>	SC043G
<b>Cardiolipin IgG</b>	CA034G	<b>Sm IgG</b>	SM039G
<b>Cardiolipin IgM</b>	CA036M	<b>SSA IgG</b>	SA040G
<b>Cardiolipin Total Ab</b>	CA077T	<b>SSB IgG</b>	SB041G
<b>dsDNA IgG</b>	DD037G	<b>Thyroglobulin Ab (TG)</b>	TG070T
<b>Mitochondrial (MA) Ab</b>	MT073G	<b>Thyroid Peroxidase (TPO) IgG</b>	TP069G

## Bone Metabolism Markers *Sample Type: Serum.*

<u>Product</u>	<u>Catalog #</u>	<u>Sensitivity (LOQ)</u>	<u>Sample Volume</u>	<u>Runtime</u>
<b>25(OH) Vitamin D</b>	VD220B	1.25 ng/mL	10 µL	90/30/30 mins
<b>ACTH</b>	AC018T	6.8 pg/mL	200 µL	270/30 mins
<b>PTH</b>	PT019T	12.7 pg/mL	25 µL	210/30 mins

## Cancer Markers *Sample Type: Serum.*

<b>AFP</b>	AF237T	5 ng/mL	25 µL	60/15 mins
<b>Beta2 Microglobulin</b>	BM010T	0.625 µg/mL	20 µL	30/30/20 mins
<b>CA 15-3</b>	CA153T	15 U/mL	200 µL	60/60/20 mins
<b>CA 19-9</b>	CA199T	15 U/mL	10 µL	90/20 mins
<b>CA-125</b>	CA125T	25 U/mL	100 µL	90/20 mins
<b>CEA</b>	CE236T	5 ng/mL	50 µL	60/10 mins
<b>Chromogranin A</b>	CN101T	10 ng/mL	20 µL	60/60/15 mins
<b>Neuron Specific Enolase (NSE)</b>	NS193T	5 ng/mL	25 µL	60/30 mins
<b>Neuron Specific Enolase (NSE) for CSF</b>	NS215T	2 ng/mL	25 µL	60/30 mins
<b>Free PSA</b>	PS142C	1 ng/mL	50 µL	60/15 mins
<b>PSA</b>	PS235T	2 ng/mL	25 µL	60/15 mins

## Cardiac Markers *Sample Type: All available in Serum.*

<b>CK-MB</b>	CK154C	-	20 µL	60/20/15 mins
<b>CRP (Ultrasensitive)</b>	CR120C	0.005 mg/L	5 µL	60/15 mins
<b>Myoglobin</b>	MG017C	25ng/mL	20 µL	45/20 mins
<b>Troponin I</b>	TI015C	2 ng/mL	100 µL	90/20 mins



## Diabetes Markers *Sample Type: Serum/Plasma.*

Product	Catalog #	Sensitivity (LOQ)	Sample Volume	Runtime
C-Peptide	CP179S	0.2 ng/mL	50 µL	60/15 mins
Insulin	IS130D	6.25 µIU/mL	25µL	60/15 mins
Pro-Insulin	PI099D	6.6 pmol/L	100 µL	Overnight

## Drugs of Abuse *Runtime: 60/30 minutes*

Product	Catalog #	Sample Type	Sample Volume	Product	Catalog #	Sample Type	Sample Volume
Amphetamine	AM080D	Oral Fluids	10 µL	Flunitrazepam	FL088D	Serum	20 µL
Barbiturates	BA081D	Serum/Plasma/Urine	10 µL	LSD	LS089D	Urine	20 µL
Benzodiazepines	BE082D	Serum/Plasma/Urine	10 µL	Methamphetamine	ME090D	Oral Fluids/Serum	10 µL
Cannabinoids	CA083D	Serum/Plasma/Urine	10 µL	Morphine Specific	MO091D	Serum	20 µL
Cocaine Metabolite	CO084D	Serum/Plasma/Urine	10 µL	Opiates	OP092D	Oral Fluids/Serum	10 µL
Cotinine	CO096D	Urine/Serum	10 µL	PCP	PC093D	Oral Fluids/Serum	10 µL
Fentanyl	FE087D	Serum	20 µL	Tricyclics	TR094D	Serum	20 µL

## Fertility Markers *Sample Type: Serum. Runtime: 60/15 minutes*

Product	Catalog #	Sensitivity (LOQ)	Sample Volume	Product	Catalog #	Sensitivity (LOQ)	Sample Volume
FSH	FS232F	5 mIU/mL	50 µL	LH	LH231F	3.1 mIU/mL	50 µL
hCG	HC251F	10 mIU/mL	25 µL	Prolactin	PR234F	5 ng/mL	25 µL

## Growth Markers *Sample Type: Serum/Plasma.*

Product	Catalog #	Sensitivity (LOQ)	Sample Volume	Runtime
Growth Hormone	HG048H	2.5 ng/mL	25 µL	30/10 mins

## Infectious Diseases *Sample Type: Serum/Plasma. Runtime: 20/20/10 minutes*

Product	Catalog #	Sample Volume	Product	Catalog #	Sample Volume
Anthrax IgG	AP024G	5 µL	EBV-VCA IgM	EV012M	10 µL
Brucella IgG	BA052G	10 µL	H. Pylori IgA	HP014A	10 µL
Brucella IgM	BA053M	10 µL	H. Pylori IgG	HP013G	10 µL
Chlamydia pneumonia IgA	CP020A	10 µL	H. Pylori IgM	HP015M	10 µL
Chlamydia pneumonia IgG	CP083G	10 µL	HSV-1 IgG	H1029G	10 µL
Chlamydia pneumonia IgM	CP095M	10 µL	HSV-1 IgM	H1030M	10 µL
Chlamydia trachomatis IgA	CT056A	10 µL	HSV-2 IgG	H2031G	10 µL
Chlamydia trachomatis IgG	CT054G	10 µL	HSV-2 IgM	H2032M	10 µL
Chlamydia trachomatis IgM	CT055M	10 µL	Measles IgG	MS018G	10 µL
CMV IgG	CM027G	10 µL	Measles IgM	MS019M	10 µL
CMV IgM	CM028M	10 µL	Mumps IgG	MP060G	10 µL
Dengue Virus IgG	DE050G	10 µL	Mumps IgM	MP061M	10 µL
Dengue Virus IgM	DE051M	10 µL	Mycoplasma IgG	MP020G	10 µL
EBV-VCA IgA	EV011A	10 µL	Mycoplasma IgM	MP021M	10 µL
EBV-VCA IgG	EV010G	10 µL			


**Infectious Diseases** *Sample Type: Serum/Plasma. Runtime: 20/20/10 minutes*

Product	Catalog #	Sample Volume	Product	Catalog #	Sample Volume
Rubella IgG	RB025G	10 µL	Toxoplasma IgM	TX024M	10 µL
Rubella IgM	RB026M	10 µL	Treponema pallidum IgG	TP076G	10 µL
Salmonella IgG	ST093G	10 µL	Treponema pallidum IgM	TP089M	10 µL
Salmonella IgM	ST084M	10 µL	Treponema pallidum Total	TP094T	10 µL
Toxoplasma IgA	TX023A	10 µL	VZV IgG	VZ081G	10 µL
Toxoplasma IgG	TX022G	10 µL	VZV IgM	VZ082M	10 µL

**Inflammatory Markers** *Sample Type: Serum/Plasma/Stool/Saliva.*

Product	Catalog #	Sensitivity (LOQ)	Sample Volume	Runtime
Alpha 1-Antichymotrypsin (ACT)	AC190S	6.25 ng/mL	10 µL	60/30/15 mins
Calprotectin	CL161S	5 ng/mL	10 µL	60/30/15 mins
Lysozyme	LS162C	1 ng/mL	25 µL	60/15 mins
Secretory IgA	SC221A	6.25 µg/dL	10 µL	60/30/15 mins

**Steroid Markers** *Sample Type: Serum/Plasma.*

Androstenedione	AD183E	0.12 ng/mL	25 µL	60/15 mins
Adiponectin	AP229G	3 µIU/mL	25 µL	60/15 mins
Cortisol	CO103S	20 ng/mL	25 µL	60/15 mins
DHEA-S	DH291S	0.50 µg/mL	25 µL	60/15 mins
Estradiol	ES180S	10 pg/mL	25 µL	60/30 mins
Estriol, Free	EF191S	0.4 ng/mL	50 µL	60/30 mins
Estrogens, Total	TE192S	10 pg/mL	50 µL	120/30 mins
Progesterone	PG129S	2.5 ng/mL	10 µL	60/15 mins
Testosterone	TE187S	0.1 ng/mL	25 µL	60/15 mins
Testosterone, Free	FT178S	0.25 pg/mL	20 µL	75 minutes

**Thyroid Markers** *Sample Type: Serum/Plasma.*

Thyroxine (T4)	T4224T	2 µg/dL	25 µL	60/15 mins
Thyroxine, Free (fT4)	F4223T	0.4 ng/dL	50 µL	60/15 mins
Triiodothyronine (T3)	T3225T	1.4 pg/mL	50 µL	60/15 mins
Triiodothyronine, Free (fT3)	F3226T	1.4 pg/mL	50 µL	60/15 mins
TSH	TS227T	0.5 µIU/mL	50 µL	60/15 mins
Thyroglobulin Ab (TG)	TG070T	-	10 µL	20/20/10 mins
Thyroid Peroxidase (TPO) IgG	TP069G	-	10 µL	20/20/10 mins



### Research Animal Kits

<u>Product</u>	<u>Catalog #</u>	<u>Sensitivity (LOQ)</u>	<u>Sample Volume</u>	<u>Runtime</u>
<b>ACTH (Mouse/Rat)</b>	AC018T-100	6.8 pg/mL	200 µL	240/30 mins
<b>Cortisol (Mouse/Rat)</b>	CO103S-100	5 ng/mL	25 µL	60/15 mins
<b>Cortisol (Sheep)</b>	CO116S-400	1 ng/mL	40 µL	60/15 mins
<b>Cotinine (Mouse/Rat)</b>	CO096D-100	5 ng/mL	10 µL	60/30 mins
<b>Estradiol (Mouse/Rat)</b>	ES180S-100	3 pg/mL	25 µL	120/30 mins
<b>Fentanyl (Canine)</b>	FE087D-300	-	20 µL	60/30 mins
<b>HSV-1 IgG (Mouse/Rat)</b>	H1029G-100	-	100 µL	20/10 mins
<b>Morphine (Canine)</b>	MO091D-300	-	20 µL	60/30 mins
<b>Prolactin (Mouse/Rat)</b>	PR063F-100	5 ng/mL	50 µL	60/30/15 mins
<b>T3 Total (Mouse/Rat)</b>	T3043T-100	0.25 ng/mL	25 µL	60/15 mins
<b>T4 Total (Mouse/Rat)</b>	T4044T-100	1 µg/dL	10 µL	60/15 mins
<b>Testosterone Total (Mouse/Rat)</b>	TE187S-100	0.1 ng/mL	25 µL	60/15 mins

Calbiotech's Animal ELISA Kits are widely used in pre-clinical trials, drug discovery and research labs in the U.S. and around the globe. Please inquire about custom development using ELISA, CLIA and magnetic bead formats for other species and applications.





## Coating and Blocking Buffers

<u>Product</u>	<u>Catalog #</u>	<u>Volume</u>
<b>Blocking Buffer (For Antibody Coating)</b>	BDMF242	250 mL, 500 mL, 1000 mL, 5000 mL
<b>Blocking Buffer (For Antigen Coating)</b>	BIMF243	250 mL, 500 mL, 1000 mL, 5000 mL
<b>Coating Buffer</b>	CRMF102	250 mL, 500 mL, 1000 mL, 5000 mL
<b>Conjugate Diluent</b>	CDMF101	12 mL, 250 mL, 500 mL, 1000 mL

## Commons: Wash, Stop, TMB, PBS

<b>PBS Buffer</b>	PBMF130	250 mL, 500 mL, 1000 mL, 5000 mL
<b>Stop Solution</b>	CC604SS	12 mL, 250 mL, 500 mL, 1000 mL
<b>TMB Substrate</b>	CC608TM	12 mL, 250 mL, 500 mL, 1000 mL
<b>Wash Concentrate (20x)</b>	CC606WC	25 mL, 250 mL, 500 mL, 1000 mL

## Sample Prep and Assay Optimization

<b>Sample Diluent IgG</b>	CC600DG	25 mL, 250 mL, 500 mL, 1000 mL
<b>Sample Diluent IgM</b>	CC600DM	25 mL, 250 mL, 500 mL, 1000 mL

## Coated Plates

<b>Streptavidin Coated Microplate</b>	GS224EP	1, 5, 25, 100+ Plates
---------------------------------------	---------	-----------------------

## Coated Beads

<b>CalMag SAV Beads</b>	SA500MB
-------------------------	---------



## Calbiotech Products are Referenced in Over 1000 Publications!

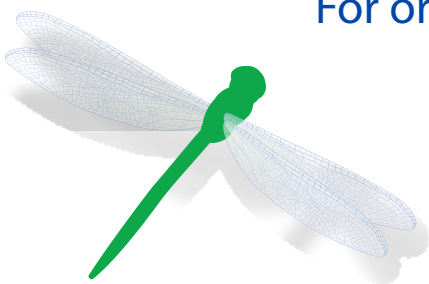
Calbiotech has been providing the finest quality products and state-of-the-art services to the global research community for over 15 years. Publications using Calbiotech products are provided for your reference:

1. **Prevalence of Chlamydia Trachomatis and its Association with Other Sexually Transmitted Infections in a Tertiary Care Center in North India**  
*M. Malhotra, et al. Indian J Sex Transm Dis and AIDS, Vol. 29, no. 2, pp.82-85, 2008.*
2. **Effects of Environmental tobacco Smoke In Vivo on Rhesus Monkey Semen Quality, Sperm Function, and Sperm Metabolism**  
*P. Hung, et al. Reproductive Toxicology, Vol.27, pp. 140 – 148, 2009.*
3. **Racial Differences in Paraoxonase-1 (PON1): A Factor in the Health of Southerners**  
*K. A. Davis, et al. Environmental Health Perspectives, Vol. 117, no. 8, pp. 1226- 1231, 2009.*
4. **Schistosoma Haematobium and Schistosomiasis Mansoni: Production of an Estradiol-Related Compound Detected by ELISA**  
*M.C. Botelho, et al. Experimental Parasitology, Vol. 122, pp. 250-253, 2009.*
5. **2-methoxyestradiol Prevents LNCaPTumor Development in Nude Mice: Potential Role of G2/M Regulatory Proteins**  
*C. Horny, et al. Journal of Cell Death, Vol. 2, pp.1-8 2009.*
6. **Urinary Levoglucosan as a Biomarker of Wood Smoke Exposure: Observations in a Mouse Model and in Children**  
*C. T. Migliaccio, et al. Environmental Health Perspectives, Vol. 117, no. pp. 74-79, 2009.*
7. **The Number of Oogonia and Somatic Cells in the Human Female Embryo and Fetus in Relation to Whether or Not Exposed to Maternal Cigarette Smoking**  
*M.C. Lutterodt, et al. Human Reproduction, Vol. 24, no.10, pp. 2558- 2566, 2009.*
8. **Influence of Nutritional Flushing Prior to Mating on the Performance of West African Dwarf Goats Mated in the Rainy Season**  
*P.K. Karikari, et al. Pakistan Journal of Nutrition, Vol.8, no. 7, pp. 1068 - 1073, 2009.*
9. **Early Adverse Rearing Experiences Alter Sleep-Wake Patterns and Plasma Cortisol Levels in Juvenile Rhesus Monkeys**  
*C. E. Berrett, et al. Psychoneuroendocrinology, Vol. 34, pp. 1029-1040, 2009.*
10. **Variation in the Ovine Cortisol Response to Systemic Bacterial Endotoxin Challenge is Predominantly Determined by Signalling within the Hypothalamic–Pituitary–Adrenal Axis**  
*Q. You, et al. Toxicology and Applied Pharmacology, Vol. 230, pp. 1-8, 2008.*
11. **Urinary Levoglucosan as a Biomarker of Wood Smoke Exposure: Observations in a Mouse Model and in Children**  
*T. Migliaccio, et al. Environmental Health Perspectives, Vol. 117, no.1, 2009.*
12. **Nicotine Promotes Tumor Growth and Metastasis in Mouse Models of Lung Cancer**  
*R. Davis, et al. PLoS ONE, Vol. 4, issue 10, pp. e7524, 2009.*
13. **Species-Specific Regulation of PXR/CAR/ER-Target Genes in the Mouse and Rat Liver Elicited by o, p'-DDT**  
*N. Kiyosawa, et al. BMC Genomics, Vol. 9, no. 487, pp. 2008.*
14. **Persistence of Antibodies Induced by Measles-Mumps-Rubella Vaccine in Children in India**  
*S. K. Raut, et al. Clinical and Vaccine Immunology, Vol. 14, no.10, pp. 1370- 1371, 2007.*
15. **Sero-Epidemiology of Toxoplasmosis Amongst Pregnant Women in the Greater Accra Region of Ghana**  
*I. Ayl, et al. Ghana Medical, Vol.43, no.3, pp. 1370-1371, 2009.*
16. **Impact of Cigarette Smoke Exposure on Innate Immunity: A Caenorhabditis Elegans Model**  
*R. M. Green, et al. PLoS ONE, Vol. 4, Issue 8, pp. e6860, 2009.*
17. **Nicotine Augments Glomerular Injury in a Rat Model of Acute Nephritis**  
*E. A. Jaimes, et al. Am J Nephrol, Vol.29, pp. 319-326, 2009.*
18. **Growth Differentiation Factor 9 Promotes Rat Preantral Follicle Growth by Up-Regulating Follicular Androgen Biosynthesis**  
*M. Orisaka, et al. Endocrinology, Vol.150, no., pp. 2740-2748, 2009.*
19. **Molecular and Biochemical Effects of a Kola Nut Extract on Androgen Receptor-Mediated Pathways**  
*R. Solipuram, et al. Journal of Toxicology, Vol. 2009, no.10, pp. 1155- 1170, 2009.*
20. **Evaluation of Plasma Hormone Concentrations Using Enzyme Immunoassay/Enzyme-Linked Immunosorbent Assay in Healthy Indian Men: Effect of Ethnicity**  
*M. Sachidhanandam, et al. Indian Journal of Clinical Biochemistry, Vol. 25, no.2, pp. 153-157, 2010.*
21. **Insecticide-Treated Bednets to Control Dengue Vectors: Preliminary Evidence from a Controlled Trial in Haiti**  
*A. Lenhart, et al. Tropical medicine and International Health, Vol. 13, no. 1, pp. 56-67, 2008.*





For orders and inquiries, please contact:



MADE IN U.S.A



**Axil Scientific**  
YOUR RESEARCH IS OUR BUSINESS

41 Science Park Road #04-08, The Gemini, Singapore Science Park II, Singapore 117610  
Tel : (65) 6775 7318 Email : [custcare@axilscientific.com](mailto:custcare@axilscientific.com)  
Fax : (65) 6775 7211 Web : [www.axilscientific.com](http://www.axilscientific.com)